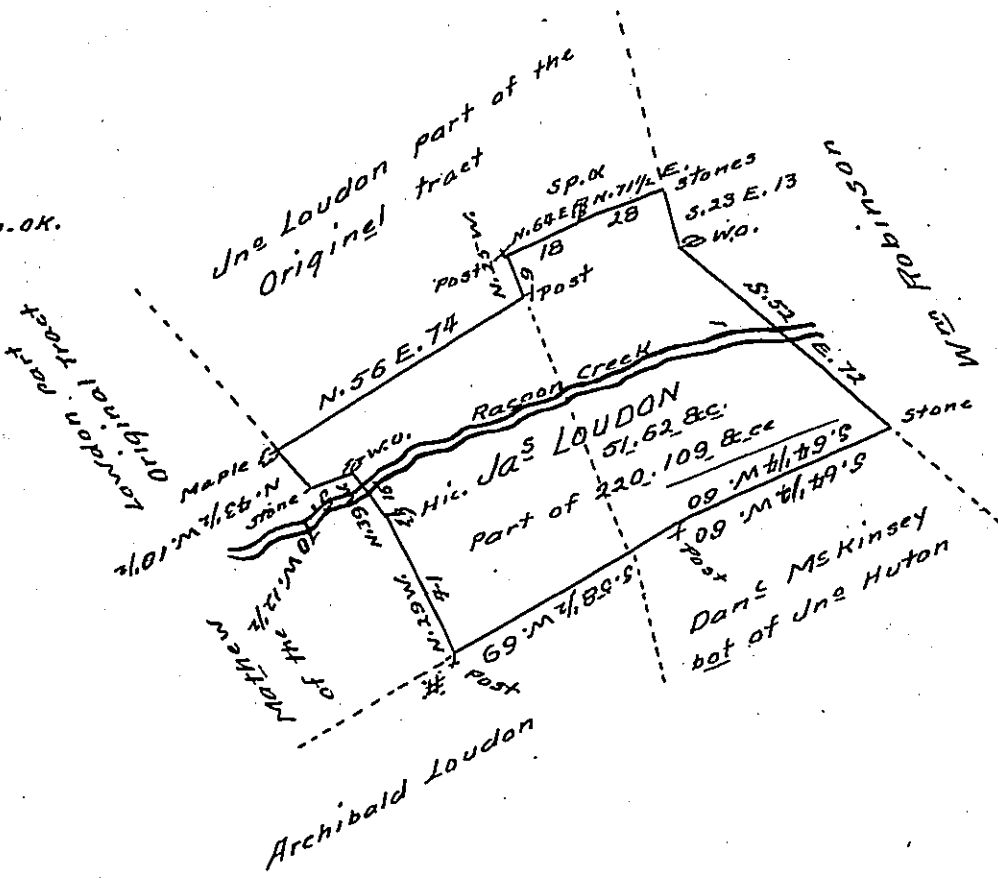


N. 29 W. 41 Hic.  
 N. 39 W. 15 W.O  
 S. 70 W. 12 1/2 Stone  
 N. 43 1/2 W 10 1/2 Maple  
 N. 56 E. 74 Post  
 N. 25 W. 9 Post  
 N. 64 E. 18 Post Sp.O.K.  
 W. 71 1/2 E. 28 Stones  
 S. 23 E. 13 W.O.  
 S. 52 E. 72 Stones  
 S. 64 1/2 W. 60 Post  
 S. 58 1/2 W. 69 #



The Draft of a tract of Land Situate in Juniatta Township Cumberland County containing fifty one acres & 62 perches & allowan-  
 l. being part of a Larger tract Surveyed on a Location granted to  
 James Loudon Dated June 23<sup>rd</sup> 1767 No 2535 Surveyed and Div-  
 ided off the 8<sup>th</sup> Day of May 1805

Wm Ramsey D.S.

To Sam<sup>l</sup> Cochran Esqr.  
 Surveyor Gen<sup>l</sup> of Pennsya.

IN TESTIMONY that the above is a copy of the original remaining on file in  
 the Department of Internal Affairs of Pennsylvania, made  
 conformably to an Act of Assembly approved the 16th day of  
 February, 1833, I have hereunto set my Hand and caused  
 the Seal of said Department to be affixed at Harrisburg,  
 this twenty eighth day of July 1904

*James R. Brown*  
 Secretary of Internal Affairs.